

## THERAPY TRACK

713-968-6594  
866-558-7225 Toll Free  
713-968-6595 Fax  
www.therapytrack.com  
5100 Westheimer, Suite 200  
Houston, TX 77056

# Remedies

Therapy Track Newsletter, Issue 10: July 2005

Therapy Track Products:  
REAL TIME INFORMATION

Real Time Productivity  
Real Time Staffing  
Real Time Cost Control

### FUTURE PRODUCTS

Documentation  
Outcome  
Benchmarking

### THERAPY TRACK

QUESTIONS  
[Click here!](#)

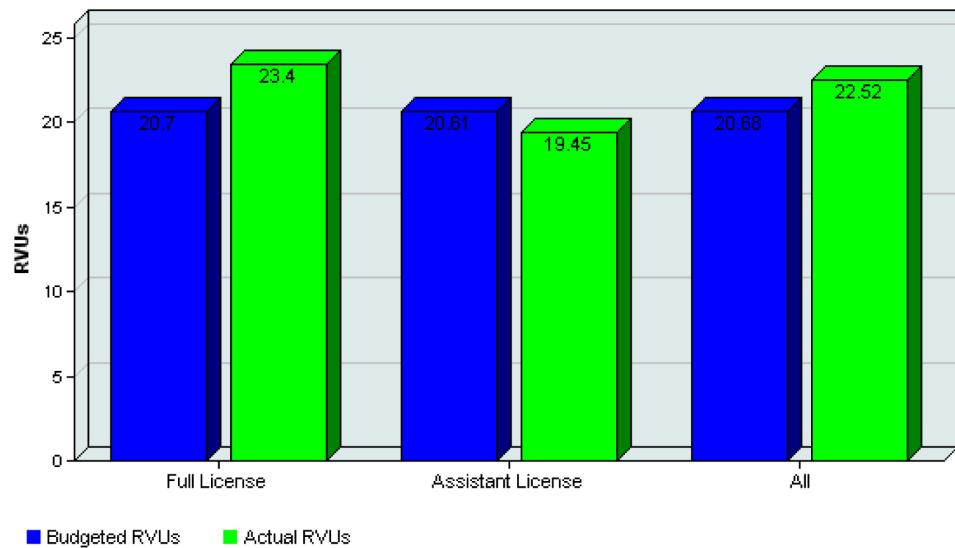
### THERAPY TRACK WEBSITE

[Click here!](#)

## Did you know?

With Therapy Track, you can access Month-to-Date performance by licensure type!

### Month-to-Date Average RVU Budget-to-Actual by Therapy Type



6/29/2005 9:12:46 AM

Percent of Budget = 108.90%

	Actual Units	Budgeted Units
Full License	23.40	20.70
Assistant License	19.45	20.61
All	22.52	20.68

**Therapy Track's motto is:**

***If you can't measure it, you can't reward it.  
If you can't reward it, you can't improve it.***

## New Faces at Therapy Track!

**Candace Lillibridge, Senior Vice President.** Candace Lillibridge, a licensed physical therapist, will spearhead national sales and new product development. She has over 15 years of rehabilitation management/director experience in the Houston Medical Center. Her experience with patients of all ages in areas ranging from sports medicine, outpatient, acute, LTAC & SNF, and training with Joint Care Specialty programs provides her with a well-rounded background to assist in individualizing client needs for management consulting and productivity requirements in a variety of settings. Candace served as Speaker of the House for the 1989 Texas Physical Therapy Associations, and she holds a BS in Physical Therapy from Texas Woman's University. Candace can be contacted at [clillibridge@therapytrack.com](mailto:clillibridge@therapytrack.com).